



THE RURAL HITCH

FOURTH QUARTER 2016

**A publication of
Lakes Region
Mutual Fire Aid
Association**

Serving:

**Alexandria
Alton
Andover
Ashland
Barnstead
Belmont
Bridgewater
Bristol
Campton
Center Harbor
Danbury
Dorchester
East Andover
Ellsworth
Franklin
Gilford
Gilmanton
Groton**

**Hebron
Hill
Holderness
Laconia
Meredith
Moultonborough
New Hampton
Northfield
Plymouth
Rumney
Sanbornton
Sandwich
Strafford
Thornton
Tilton
Warren
Waterville Valley
Wentworth**



62 Communications Drive
Laconia, New Hampshire 03246
603.528.9111
www.lrmfa.org



Blueberry Lane Fire, Meredith

These photographs were taken of a fire at 30 Blueberry Lane in Meredith by Meredith Police Officer Phil McLaughlin on November 9, 2016. The residents were away on vacation. The house was located down an 1,800-ft. driveway. The call came in around 2:09. Neighbors had reported a smell of smoke around 10:00 but, because of the long driveway, they had been unable to locate the source. Immediately a first alarm was called due to the home being out of the hydrant district. The first alarm brought Laconia, Center Harbor, Holderness, Moultonborough, and Gilford to the scene, with Ashland and New Hampton to cover. C1 requested a couple of additional tankers. New Hampton and Gilford responded to the request, with Bristol arriving to cover. The building was a total loss with few personal belongings located the following day. The cause of the fire was listed as undetermined at press time. 🚒



Pipe and Drum Band Recruiting New Members

The Professional Fire Fighters of New Hampshire (PFFNH) Pipe and Drum band is recruiting new members. Membership is open to anyone who has a desire to honor the fire service at funerals, parades, and other special events. You do NOT need to be a member of a fire department to join. In the near future, the band will host an open house. In the meantime, anyone who has questions may contact Benson Goodwin by emailing bensongoodwin@gmail.com or texting (603) 219-6729. 🚒

SUPERPASS® 5

SMALLEST • LIGHTEST • LOUDEST • STAND-ALONE PASS
NFPA COMPLIANT

SUPERPASS® 5 PROVIDES AN IMPROVED LEVEL OF SAFETY FOR FIREFIGHTERS

INTRINSICALLY SAFE TO UL913, AND CSA C22.2, No 157

- COMPLIANT TO NFPA 1982, 2013 EDITION REQUIREMENTS FOR PASS
- BRIGHT, HIGHLY VISIBLE LED STATUS INDICATORS
- LARGE STAINLESS STEEL GRIP-CLIP & D-RING
- 95+ DBA SOUND PRESSURE LEVEL AT 500° F (260° C)
- DATA-LOGGING ALL PASS STATUS CHANGES (ON, OFF, ALARM, ETC)
- HEAT STRESS TEMPERATURE ALARM ON ALL 5 LINE MODELS

NFPA COMPLIANT
PROTECT ALL PERSONNEL
No SCBA REQUIRED

- WHEN YOU ARE WEARING YOUR SCBA, WE KNOW YOUR NFPA INTEGRATED PASS ALARM MAKES YOU COMPLIANT.
- WHAT HAPPENS WHEN THE SCBA IS REMOVED DURING SCENE OVERHAUL?
- WHEN YOU REMOVE THE SCBA, YOU ARE REMOVING NFPA COMPLIANCE FOR USE OF PASS ON YOUR FIRE GROUND.
- INTEGRATED PASS PROTECTS AND MAKES YOU COMPLIANT INSIDE THE HOT ZONE; WHAT MAKES YOUR PERSONNEL OUTSIDE THE HOT ZONE NFPA COMPLIANT?



CONTACT

BERGERON
PROTECTIVE CLOTHING

603.736.8500

WWW.BERGERONPROTECTIVECLOTHING.COM

1024 SUNCOOK VALLEY HIGHWAY, UNIT D5, EPSOM, NH 03234

Board of Directors

EXECUTIVE COMMITTEE

Chief Rene Lefebvre
Chair
ANDOVER

Dave Paquette
Secretary/Treasurer
DEP. CHIEF (RET.), ASHLAND

Chief Mike Drake
NEW HAMPTON

Chief Mike Sitar
TILTON/NORTHFIELD

Chief Dave Bengtson
MOULTONBOROUGH

Chief Paul Dexter
SANBORNTON

- | | |
|--|--|
| <i>Alexandria</i>
Chief Mark Chevalier | <i>Hill</i>
Chief Dee Ford |
| <i>Alton</i>
Chief Ryan Ridley | <i>Holderness</i>
Chief Eleanor Mardin |
| <i>Andover</i>
Chief Rene Lefebvre | <i>Laconia</i>
Chief Ken Erickson |
| <i>Ashland</i>
Chief Steve Heath | <i>Meredith</i>
Chief Ken Jones |
| <i>Barnstead</i>
Chief Shawn Mulcahy | <i>Moultonborough</i>
Chief Dave Bengtson |
| <i>Belmont</i>
Chief Ken Erickson | <i>New Hampton</i>
Chief Mike Drake |
| <i>Bridgewater</i>
Chief Don Atwood | <i>Northfield</i>
Wayne Crowley |
| <i>Bristol</i>
Chief Steve Yannuzzi | <i>Plymouth</i>
Chief Casino Clogston |
| <i>Campton/
Thornton/Ellsworth</i>
Chief Dan Defosses | <i>Rumney</i>
Chief Dave Coursey |
| <i>Center Harbor</i>
Chief Leon Manville | <i>Sanbornton</i>
Chief Paul Dexter |
| <i>Danbury</i>
Chief Tom Austin | <i>Sandwich</i>
Chief Ted Call |
| <i>Dorchester</i>
Claudette Hebert | <i>Strafford</i>
Chief Scott Whitehouse |
| <i>Franklin</i>
Chief Kevin LaChapelle | <i>Tilton</i>
Katherine Dawson
Chief Michael Sitar,
Alternate |
| <i>Gilford</i>
Chief Steve Carrier | <i>Warren</i>
Chief Arthur Heath |
| <i>Gilmanton</i>
Chief Joe Hempel | <i>Waterville Valley</i>
Chief Chris Hodges |
| <i>Groton</i>
Chief Roger Thompson | <i>Wentworth</i>
Chief Jeff Ames |
| <i>Hebron</i>
Chief John Fischer | |

From the Chief...

By Chief James R. Hayes



Another year is almost over! With that said, I believe it has been a good year and things continue to move forward in a positive way. Most of the infrastructure projects have been completed, with those remaining significantly underway. An additional transmitter site was added in Sandwich to overcome signal loss that was created due to the FCC narrow banding requirement. A significant improvement has been seen. We are looking to address this same issue in Strafford, probably in a similar manner. Fiber optic connectivity has been completed to five sites and is being utilized; three other sites are underway for fiber optic connection within the next 6-8 weeks. The Hemp Hill Tower project, with the Town of Bristol, is now in a position to get underway, and will likely see a Spring or early Summer completion.

The process for hiring a new Chief Coordinator is continuing. The position was advertised for a period of one month and 18 applications were received. The Executive Committee reviewed the applications and narrowed the candidate pool, with seven being selected for interviews. Interviews were conducted on December 19th and 20th by an interview panel consisting of three chiefs from LRMFA and one city manager. The interview panel was charged with ranking the candidates and presenting that list to the Executive Committee. The Executive Committee will then conduct final interviews with the top candidates after the beginning of 2017. The goal is to make a job offer to a candidate by the end of January or early February 2017.

One of our full-time dispatchers has resigned to take a position as a full-time paramedic at a local service, so we are in process of filling that position. We also have five per diem dispatcher trainees just beginning their training period. As you can see, a lot is going on right now that revolves around personnel.

This may be my last article as the Chief Coordinator based on the actual start date of the new Coordinator so, with that said, I would like to once again say I have enjoyed working for Lakes Region Mutual Fire Aid and with many of you directly. This is a great organization as a whole and a top-quality communications center, with great personnel working here. I will watch with excitement from the sidelines to see where it goes in the future. Thank you for the support you have given me in the time I've been here. 🚒

THE RURAL HITCH
is published quarterly by
Lakes Region
Mutual Fire Aid Association

Chief
James R. Hayes

Editor
Debbie Kardaseski

Email all submissions to:
debbie@debbiegraphics.com

Initial On-Scene Radio Reports

By Ken Erickson, Chief, Laconia and Belmont Fire Departments

Why is the first radio report so important? First and foremost, it sets the tone for the remaining units responding. What you say over the air can have a big impact on the response. The same holds true for what you do not say. People will speed up their response, whether to the scene or to the station if they hear “fire showing.” That same report will, in all likelihood, increase the number of people responding, especially for the call and volunteer department. However, simply saying “fire showing” is not a good report; it can cause people to overreact. You must provide some detail.

BE BRIEF

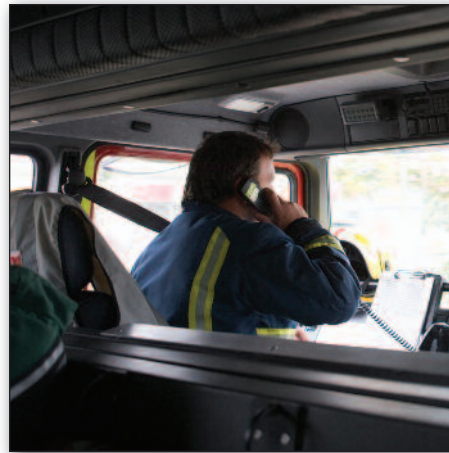
You are not writing a book; however, the first on-scene report should paint a quick picture of the emergency scene. This article will focus strictly on structure fires. The first person on-scene should give a brief radio report indicating a couple of key points or factors. First is the type of building and occupancy. For most of us it will be “on scene a single-family home.” Most homes are wood frame, so that is a given. Now describe the size of the home — “a large single-family home,” or maybe “a raised ranch,” or “a 2-story colonial, or “a story and a half cape.” Everyone should now have a pretty good idea of the building. However, it may be that the report requires more detail because the building is not normal — “on-scene of a very large 3-story Victorian multi-family dwelling, or “on-scene a very large garden apartment building,” or “on-scene a 7-story senior housing complex.” As you can see the report can have an impact on responders and how they prepare to go to battle.

For those responding, the initial report starts setting you up for what you may have to do upon arrival. Your thought process is going to be completely different for a residential mobile home versus a 3-story multi-family. This reports affects chiefs and firefighters. Neighboring chiefs may start responding much sooner if they hear “fire showing from a large 2-story office building”

versus a 1-stall garage with no exposures. The person having the fire in the big building is going to appreciate the extra chiefs, especially if things don’t go well.

WHAT ARE THE CONDITIONS?

Second step is to briefly report conditions that are important. Strobe activation is not an important size-up. Smoke showing is an important part of the report. But take a moment and give some detail. Light smoke showing from a Loews is telling people quite a bit. Any smoke showing from a big building is



not a good sign. It takes a fairly large fire to fill a large area building with smoke. Heavy smoke showing is an important report, but what is it showing from — a garden shed or a 2-story colonial. This changes everything. A smaller building will fill with smoke quickly and can be deceiving. Smoke showing from the 1st and 2nd floor of a 2-story colonial is not a good sign. It could be a cellar fire. When looking at smoke a good key indicator to fire intensity is the velocity that the smoke is pushing from the openings. High velocity equals high heat. Again, don’t get misled by light smoke from big buildings. I think most of us can differentiate between what is heavy smoke and what is light smoke. But remember, the size or volume of the building can dictate how the smoke pushes from the building. The smaller the building the quicker smoke will become heavier. Never under estimate

light smoke showing from any building, but especially a large building.

We have all heard first-on-scene reports that stated “fire showing” and nothing more. Responders tense up, people may tend to drive faster, the heart rate will increase, and we will start to get tunnel vision. Yet, two minutes later, another officer gives the following report: “tell everyone to slow down. It’s a vacant barn that is already starting to collapse and there are no exposures.” Your radio report can have serious consequences.

Other fire departments are listening, Lakes Region Mutual Fire Aid (LRMFA) personnel are listening, the police are probably listening. They are all starting to focus on the radio and thinking about what is coming. Are we due on the 1st or 2nd alarm; should I call in more cruisers to close roads; should I pull up the run card or hydrant map (LRMFA); call and volunteer neighbors may start heading to the station.

WHAT IS A GOOD REPORT?

So, a good initial report describes the building type and construction, the occupancy, any serious exposures, what conditions are visible, and other pertinent items, such as a hydrant across the street, or people are hanging from a second-floor window. There should be a follow-up report within a few minutes going into more detail about what actions are being started, expectations for incoming units, and requesting additional resources. Some may call for additional alarms during the first report, especially when it is obvious you’ll need help.

When it comes to exposures, keep it simple. Unless the exposure is of more importance than the building on fire, just say you have exposure problems. If fire is spreading to the exposure say so. When you provide a follow-up report, you can then go into more detail. For the rural areas of our system exposures may be a garage or barn, or maybe the house exposed by the barn. For the

CONTINUED ON NEXT PAGE

Laconia Fires



Above: On November 5 at 11:30 a.m. LRMFA started taking multiple calls for this fire on Winnisquam Ave. Captain Shipp arrived with heavy fire in the rear of a 2-story wood frame building and fire extending to Exposures B and D. He requested a 2nd alarm. A 2½ inch line was placed in the rear and knocked down the exposures and then attacked the main body of fire. The primary building was heavily damaged. Laconia, Gilford, Belmont, Meredith, Tilton, Franklin, and Sanborn-ton worked the fire. Cover was provided by Stewart's, Meredith, and Holderness.

At right: Two days later, on November 7, a fire erupted on Holman Street, just past 5p.m. Lt. Vaillancourt and his crew pulled a 2½" line, knocked down the fire in seconds, and prevented spread to the home, which was 10 feet away. 🚒



INITIAL ON-SCENE REPORT – CONTINUED FROM PREVIOUS PAGE

more urban areas exposures can be other triple-deckers, business blocks, etc. But just saying you have exposure problems is telling a message that more help will be needed, master streams may be needed, and solid water supply will be needed. In the follow-up report the IC may go into detail about the exposures, especially if the exposure is going to warrant special concern or additional response. A 1-story wood frame barn exposing a 2-story wood frame fireworks store is an example.

The initial report can be very helpful

to the person giving it, as it provides them a chance to focus on the problem and start formulating a plan. It forces them to slow down and look closely and define the problem. Hopefully, the person walks around the building to start a good size-up, but that's another article. How do you get good at giving reports? Practice. Drive around and look at buildings and imagine a fire, then give a report to yourself – "Car 1 is on-scene. I have heavy smoke pushing from the C side cellar door of a 1-story wood frame assembly. Building is roughly 60 x 40.

No occupants visible; parking lot is empty. No exposures. Hydrant 200 feet south of the building. Strike a 1st alarm."

When you go to "routine alarms," get in the habit of giving an initial report for every building. When you pull up to an actual fire, it will be second nature. Unfortunately, with the changes to the radio systems many of us can no longer hear on-scene reports. So, what's the next important component of this report? That LRMFA repeats it in the same detail.

Prime Time

By Alex McCurdy, Chief Ret., Owner RDSS, Inc., Pump Training Specialists

I recently watched a video of a company demonstrating a drafting operation with a lift of about 20 feet. It was a typical rural setting: drafting from a static water supply with the apparatus on a bridge above the water source. I noticed something critically wrong when they showed a well over two-minute timeframe for priming the pump. The pump was engaged and engine RPMs were at 1,000 for the duration of priming. In translation, this means over two minutes of dry run time. In this case, the pump had to be engaged for the primer to operate.

Most pump experts will say that spinning a pump dry for that amount of time will damage the pump.

Hale (IDEX Corp.) has published this take on it. I am quoting them, "As a rule of thumb, midship pumps should be primed immediately after being engaged (run). This is to prevent serious damage that can occur from running the pump dry (drained of water) for an extended time period. (Check with your fire pump manufacturer for pump-brand specific recommendations.) Damaging a pump by running it dry for an extended period can happen after positioning an engine for a drafting operation at a pond and engaging the pump. If problems ensue, it may take minutes to remove the pump suction cap and connect and tighten lengths of hard suction hose from the supply source. In a situation like this, you are better off assembling your suction connections first, priming the pump second, and engaging the midship pump third. Damaging the fire pump by running it dry for an extended period means that the apparatus must be taken out of service for a potential costly repair."

What they are saying is that an extended dry run time, priming or not, is a serious issue that causes damage to the pump. Dry run damage occurs more rapidly than damage from a wet pump over-heat. Loss of pump performance and the need for major repairs become likely!

Most primers will do their job in 45 seconds or so. However, the high lift, or dry hydrant, challenges this timeframe. Here are some simple things the operator can do:

1. Get set up before engaging the pump.
2. If possible, prime the pump before engaging it. Yes, this works! Of course, this is tricky if you have air leaks because the prime will be lost in the time it takes you to engage the pump and get back to the pump panel.
3. One of the most important tricks is to wet the pump as you are priming. Assuming you have a tank full of water, this is done by opening the tank to pump but it takes some practice to master.

4. Experienced pump operators will be also feathering a discharge once the first air bubble and water mix hits the pump. The best spot to do this is the highest discharge on the pump.
5. Finally, you should assume you don't have a prime until you can build pressure and flow water. You will need to get the inevitable air pockets out of the pump and suction tube. On many pumps this means flowing a larger GPM for a brief period.
6. One final point: a bleeder or blow off helps ensure water is flowing and keeps the pump from overheating. Remember, however, that the flow from the bleeder line is subtracted from the overall available fire flow. For instance, a 1250 GPM pump at a high draft or connected to a dry hydrant may not be capable of achieving rated pump capacity. Whatever the flow you use for blow-off purposes must be taken into consideration in the anticipated fire flow. 🚒

LRGHealthcare

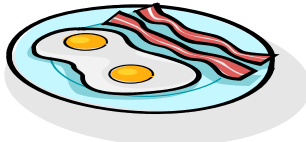
AL's Breakfast

Con-Ed for EMS and Nursing


2017 SCHEDULE

Wednesday	January 4th	Gilford
Wednesday	February 1st	Laconia
Wednesday	March 1st	Sanbornton
Wednesday	April 5th	New Hampton
Wednesday	May 3rd	Stewart's Ambulance
Wednesday	June 7th	Laconia
Enjoy your	July	Summer
Enjoy your	August	Summer
Wednesday	September 6th	New Hampton
Watch for	Paramedic	RTP
Wednesday	November 1st	Gilford
Wednesday	December 6th	New Hampton

All Breakfasts will be from **0900-1100hrs**



Any Question please contact Shawn Riley 524-6881or
smriley@lrg.org

Who the heck is AI?


Sales, Installation and Service for Wireless Communications and
Emergency Vehicle Equipment

SERVING YOU

38

YEARS...
AND COUNTING



Ossipee Mountain Electronics

SELLING BETTER SOLUTIONS

Now at two locations!
Moultonboro, NH & Northfield, NH

sales@omesbs.com

800-639-5081

www.omesbs.com



*Manchester, NH
E-One 100' Platform / E-One Custom Pumper*



Greenwood Emergency Vehicles
530 John L. Dietsch Blvd.
North Attleboro, MA 02763
www.GreenwoodEV.com
(508) 695-7138

*Hanover, NH
E-One Commercial Tanker*



Desorcie Emergency Products
183 Bingham Shore
St. Albans, VT 05478
www.desorcieemergency.com
(802) 527-2216

Check us both out on Facebook! visit us online for details.

Rumney Fire Department News



Rumney Fire Department has had a quiet Fall. There have been rescues the members have participated in on Mt. Percival and Mt. Cube, and a night rescue off Rumney Rocks. The night rescue required a first alarm for manpower, with Wentworth, Warren, and Plymouth responding. Campton also responded with new rescue equipment, which was used for the first time on this call. They also provided the pictures. This was a difficult rescue due to the darkness and the cliff area the rescuers needed to access.



Extrication training was held at CMR with Hebron and Wentworth joining Rumney for this all-day event. Classroom time was held at the station with hands-on training at the junkyard.

**Send your Department News to debbie@debbiekgraphics.com.
Include new hires, promotions, new apparatus,
department events, open training events, fires, rescues, etc.**



*Mammoth Fire Alarms
Incorporated*



RADIO TRANSMITTER STAR/6 PAC

INCLUDES:

- 1 - Star Transmitter 6 Zones
- 1 - Battery 7 AH
- 1 - Antenna
- 1 - RG58 75' Antenna Coax Cable w/ Connectors
- 1 - Set of Antenna Mounting Brackets
- 1 - ZDS/6 Zone Disconnect Switch (6 Zones)
- 1 - Lightning Arrestor
- Includes Programming, Test and Start-up

FEATURES:

- Easily programmed using a laptop
- Can transmit Emergency Response Signals such as Fire, Medical, Supervisory, Police, etc.
- Meets and exceeds NFPA 72 and 122 Standards
- Automatic Self-Testing
- Capable of operating on 100 to 120VAC power, without any modification.
- Standard 211 Lock; Cat 30 Optional



Contact us for your next STAR 6PAC!!!!

"Servicing the installer before and after the installation."
SALES (978) 934-9130 · 1-800-995-9808 · FAX (978) 934-9131
176 Walker Street www.mammothfire.com Lowell, MA 01854

KFCi *King-Fisher Company, inc.*

MCR²
Multi-Communication
Receiving and Reporting Console

MCR²- The Next Generation of Fire/Emergency Management Systems!

The King-Fisher MCR² Console is designed for receiving, monitoring, and reporting of events sent from Radio Transmitters. Fire / Medical / HAZMAT / Security / Police / EMS/ any critical event defined by you for reporting.

Features:

- Backward compatible with existing King-Fisher Radio Transmitters
 - STAR
 - KFAPT
 - KFRTI-8S
 - KF1S/KF3S
 - IRAC
- Connects to multiple workstations with MCR² Software
- Unlimited account capacity
- 12VDC battery backup.
- 19" Rack or desktop mounting.
- Boards accessible through front door on both 19" rack and desktop versions.



"World Leader in Critical Protection Systems Monitoring & Radio Reporting"
81 Old Ferry Road - Lowell, MA 01854
Phone: 978-596-0214 • www.kfci.com • Fax: 978-596-0217



Training Division News

The Training Division has been meeting regularly to assess system-wide training needs and determine how to deliver programs to meet those needs.

The LRMFA Company Officer Development Series we offered monthly is an example of a program we evaluated and made some significant changes to. First was the name of the program. Feedback from members indicated having the title of Company Officer in the program name was restricting in that many thought if you were not a company officer you could not attend. That was never the Training Division's intent. But, often perception is reality, so we changed the name of the program to LRMFA Training Division, Fire-ground Development Series. Because of struggles to sustain a monthly program, the delivery format of the series was redesigned and it will be delivered as quarterly offerings in 2017. Several months ago, we began discussions with Lt. Bill Greenwood of Fire Emergency Training Services Consultation Services (FETC Services), to explore programs available that would provide high-quality, relevant training for our members. We are pleased to announce that we have entered an agreement that will bring these programs to you, at convenient locations within our system at affordable prices. (See ad on facing page).

Next, we have been working diligently to bring quality pump operator courses to the system. We were confident we would be hosting a Certified NHFA All Vehicle Pump Operator program in Holderness this past Fall. Unfortunately, that did not come to fruition. We are continuing to work with the NHFA to deliver that program in Spring 2017. The Training Division (TD) has been pursuing other avenues to bring quality pump operator training for both the novice and experienced pump operator. We have been in discussion with Mark Davis of Got Big Water (GBW) in Maryland and Alex McCurdy of Fire Department Support Systems (FDSS) of Littleton, MA. Both training companies offer programs we believe will address specific pump operator training needs at all levels. The TD will be meeting in January to evaluate the

programs offered by all three organizations (NHFA, GBW, and FDSS) and the logistics of delivery in the LRMFA system. Stay tuned, more information to follow.

It has been some time since we have delivered a Certified FFI and/or FFII program within the system. The TD will explore opportunities for delivery of these programs in the future.

As always, the TD will be keeping its eyes and ears open looking for opportunities to bring quality training opportunities to you. Visit us on the web at www.lrmfa.org or Facebook at Lakes Region Mutual Fire Aid Training Division to stay abreast of what happening in the LRMFA system. 🚒

NH DEPARTMENT OF SAFETY,
Division of Fire Standards and Training & Emergency Medical Services, announces...

Firefighter II

March 15 through June 7, 2017

CREF NUMBER:	2317II327
LOCATION:	Raymond S. Burton Training Facility 80 Ray Drive Bethlehem, NH 03574
SCHEDULE DETAILS:	Classes: February 23 through May 11, 2017 <i>*Please see attached schedule for class dates and times*</i>
COST:	\$ 525.00 Affiliated \$ 2,175.00 Non-Affiliated
PREREQUISITES:	<ul style="list-style-type: none"> • Student Medical Release Form • Equipment Requirements • Equipment Requirements • ICS 100 & ICS 200 <i>OR</i> H806 • Must be 18 years old at time of registration. • Firefighter I
REGISTRATION:	<ul style="list-style-type: none"> • Complete & Submit the NHFSTEMS General Admission Application. • Applications can be submitted in person, by mail, fax, or email. Scanned applications can be sent to nhfaadmissions@dos.nh.gov. • Payment: <ul style="list-style-type: none"> * Affiliated: Department sign off for payment is required in Section 3 of the current application form. * Non-Affiliated: The separate "General Payment Form", on page 2 of the current application, must be completed with information pertaining to your chosen method of payment. Please make checks a & money orders payable to NHFSTEMS and submit along with your application. * All payments will be deposited upon acceptance. • Applications are accepted on a first-come, first-serve basis by: <ol style="list-style-type: none"> 1. NH affiliated applicants 2. non-affiliated NH residents 3. out-of-state applicants

Application Window:
January 9 through March 8, 2017

CONTACT INFORMATION: Captain Antonucci
Nickolas.antonucci@dos.nh.gov

NH Fire Standards and Training & EMS 98 Smokey Bear Blvd, Concord NH 03301 P: 603-223-4200 F: 603-271-1091



he t,

LRMFA General Membership Bi-Annual Meeting

HOSTED BY THE NEW HAMPTON FIRE DEPARTMENT

**26 INTERVALE ROAD
NEW HAMPTON**

January 26, 2017

Dinner:

1800 Hrs.

Meeting:

1900 Hrs.

Program:

1930-2100 Hrs.



Keynote Speaker

Billy Greenwood, FETC Services

Presents "Developing the Leader From Within"

Truth is we do a pretty good job preparing firefighters on how to rescue civilians and extinguish fires but has your department honestly prepared the next generation of leaders? This keynote training address will discuss how to better implement interpersonal dynamics within the people business. Leading a dynamic group of men and women in the fire service can be a challenge for even the best of officers. Learn better ways to gain greater respect, productivity and firehouse motivation other than legitimate (bugle) power. The fire service has been traditionally an "Old Power" one-size-fits-all paramilitary culture. But for many who have never been in the military, they often find "Old Power Leadership" to be toxic. So, if you are struggling to engage the newest generation of firefighters, this discussion will provide you with a "New Power Mindset" to achieve the leadership edge.



Presenter: Billy Greenwood is a 23-year student of the fire service, holding positions in volunteer, paid on-call, and career fire departments. He is currently the Assistant Fire Chief of Training with the Manchester-Boston Regional Airport and Lieutenant with the City of Keene Fire Department. Billy is a Pro-Board Instructor III; Senior Staff Instructor with the New Hampshire Fire Academy; FDIC International presenter for the past 6 years; member and presenter for ISFSI – International Society Fire Service Instructors; and the owner FETC Services. He has been published in *Fire Engineering* and *Fire Rescue* magazines and hosts a radio show called *Tap the Box on Fire Engineering Radio*.



Lakes Region Mutual Fire Aid Training Division Fireground Development Seminar Series 2017 Schedule



Presenter: Billy Greenwood is a 23-year student of the fire service, holding positions in volunteer, paid on-call, and career fire departments. He is currently the Assistant Fire Chief of Training with the Manchester-Boston Regional Airport and Lieutenant with the City of Keene Fire Department.

Billy is a Pro-Board Instructor III; Senior Staff Instructor with the New Hampshire Fire Academy; FDIC International presenter for the past 6 years; member and presenter for ISFSI – International Society Fire Service Instructors, and the owner FETC Services. He has been published in *Fire Engineering* and *Fire Rescue* magazines and hosts a radio show called *Tap the Box on Fire Engineering Radio*.

- Tuesday, Feb. 7, 2017** Ahhh The Dreaded RIT Assignment – Beyond the Textbook!
Campton Town Hall, 12 Gearty Way, Campton
- Tuesday, April 4, 2017** Mayday Management for Incident Command – Strategic Considerations Unfolded
Meredith FD, 286 DW Highway, Meredith (Parking in Town Parking Lot across street from FD)
- Tuesday, Sept. 5, 2017** Caught In the Flow Path – Making the Push – The First Critical Line
Tilton School Auditorium, 30 School St., Tilton (Parking across street at ice arena or town parking lot adjacent to Tilton FD)
- Tuesday, Nov. 21, 2017** Tactical TIC Thermal Imager Training – Do We really Understand How This Thing Works?
Laconia Fire Department, 848 North Main St., Laconia (Parking at Opechee Park)

Course descriptions can be found on the Training Center page at www.lrmfa.org • All class times: 1830-2100 hours

Pre-registration required: Registration form can be found on the Training Center page at www.lrmfa.org

Cost: \$10.00 per person per class. • Questions? Contact jbeland@lrmfa.org

Gilmanton Fire Department News

At 9:07 a.m. on December 2, the Gilmanton Fire and Police Department were dispatched to a reported motor vehicle accident with entrapment and wires down on Route 140 near Cogswell Mountain Road. Units arrived to find a car suspended on a utility pole, with a single occupant trapped and pinned in the car.

Additional manpower was requested from the Belmont Fire Department and all units worked to secure the car and began the 20 minute extrication process. A young male was removed from the car and transported by Gilmanton Ambulance (9A1) to the Gilmanton School ballfield where they were met by a DHART helicopter that transported the young man to the hospital by air.

Thanks to all the fire and police personnel who assisted in this operation. 🚒



New Hampton Fire Department News

By Dan Seufert, Union Leader Correspondent

Firefighters from several area towns fought the forces of gravity and the flowing waters of a stream to save a man with a serious head injury from an SUV that had gone off Winona Road on December 19.

Rescue crews used a fire truck's mechanical ladder and an elaborate rope system to lift the victim, said to be a Lakes Region man in his 30s, out of the SUV and onto the stream's embankment, and then pulled him to safety with a second rope system, said Fire Chief Mike Drake.

"The vehicle was on its side, threatening to tip and roll into the stream," Drake said. "It also threatened to roll on some of our rescue people."

Police Chief George Huckins, who said alcohol was a factor in the crash and said the driver has been charged with DWI, praised the rescue effort.

"The firefighters did an incredible job getting the victim out," he said. "It was an outstanding rescue."

The accident happened at about 1:30 p.m. along Winona Road near where the road meets Dana Hill Road. "The driver didn't negotiate a corner," Drake said. "The car went off the road and over an embankment, almost into the stream."

Two of the car's three passengers managed to escape the car, he said. Both were taken to area hospitals with various injuries. None of the victims suffered life-threatening injuries, Drake said.

When police arrived and questioned the driver, they determined he was intoxicated, said Huckins, who said the driver's name would likely be released the next day.

Rescue crews, meanwhile, decided that the third victim,



Firefighters rescue a man from an SUV that had gone off of Winona Road in New Hampton on Monday. COURTESY NEW HAMPTON POLICE DEPARTMENT

who was the most seriously injured, would have to be rescued with the help of the Ashland Fire Department's ladder truck. Having rigged a rope system, they dropped a safety line from the ladder, which had been stretched above the SUV.

Firefighters and EMTs then surrounded the SUV and pulled the victim from the car onto a Stokes Basket. He was then pulled to safety on the road above.

"He was in a precarious position," Drake said of the victim. "We managed to get him out." 🚒

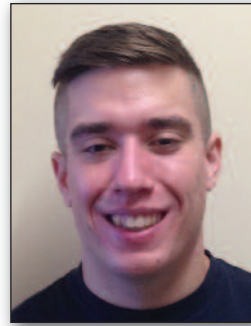
New Faces, New Places, New Equipment



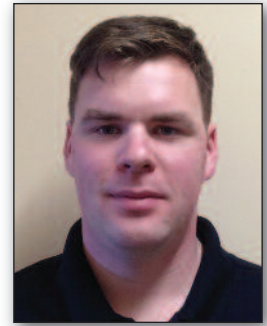
COMPLETED FFI
Sean Zaikowski
Rumney Fire Dept.



**COMPLETED FFI
PASSED NATIONALS
FOR EMT**
Rachel Legg
Rumney Fire Dept.



NEW HIRE
Nicholas Baker
Tilton-Northfield Fire Dept.



NEW HIRE
Zachary Mellett
Tilton-Northfield Fire Dept.



**PROMOTED TO
LIEUTENANT**
Jonathan Powell
Tilton-Northfield Fire Dept.



NEW HIRE
Randy Danforth
Laconia Fire Dept.



NEW ENGINE – MEREDITH 14E4A
2016 Pierce with Arrow XT chassis and Detroit Series 60 525 HP.
Transmission: Allison Gen IV 4000 EVS 6 speed. Pump: Waterous 1,750 GPM.
Tank: 2,500 Gallon. Foam: 20 Gallon Pierce Husky™ 3 Foam System. Ladders:
28' / 16' / 10' Ground Ladders. Deck Gun: Pre-piped deluge gun.
Crew Capacity: 6. This truck also has a 2,500 gallon Folda-Tank and
carries 1,200 feet of 5-inch supply hose.

2017 Rural Hitch Schedule

FIRST QUARTER ISSUE

Deadline: Monday, March 27, 2017

SECOND QUARTER ISSUE

Deadline: Monday, June 26, 2017

THIRD QUARTER ISSUE

Deadline: Monday, September 25, 2017

FOURTH QUARTER ISSUE

Deadline: Monday, December 26, 2017

Please send your ads, articles, photos, new apparatus photos, new department member information, promotions, department events, etc. to debbie@debbiekgraphics.com.

If you would like help writing an article or need photos taken, please give Debbie Kardaseski a call at 603-344-9812.

Remember: This newsletter belongs to all members of Lakes Region Mutual Fire Aid. It's a wonderful opportunity to get your information out to all departments within the system as well as over 100 other interested people. And it's FREE to members!

LRMFA Headquarters Laconia, NH

PHOTO COURTESY CHRIS REYNOLDS ©2015



Fourth Quarter 2016 Statistics...

OCTOBER 1, 2016–DECEMBER 31, 2016

Incidents Dispatched:	October 2016	1,921
	November 2016	1,894
	December 2016	2,101
	Quarter Total	5,916
	YTD Total	25,039

Statistics For This Quarter:

Number of incidents:	5,916
Radio transmissions	62,216
Emergency phones	7,642
Administrative phones	4,885

This breaks down on a daily basis to **64** incidents per day and **11** radio transmissions for each incident — or **676** per day on average. Along with the emergency incidents we answered/made, **53** calls were made on the administrative lines and **83** calls on the emergency phones were made per day.

Statistics For Year-to-Date:

Number of incidents:	23,039
Radio transmissions	270,746
Emergency phones	30,289
Administrative phones	20,577

This breaks down on a daily basis to **69** incidents per day and **11** radio transmissions for each incident — or **742** per day on average. Along with the emergency incidents we answered/made, **56** calls were made on the administrative lines and **83** calls on the emergency phones were made per day.

Overall the communication center has seen a 6% increase in incident volume from the previous year (2015). Staffing has remained the same as previous years and the center continues to increase in incident volume. Great job by all dispatchers, full-time and per-diem.



The communications center staff completed many other behind-the-scenes requests for service. These items are typically done during regular dispatcher shift rotations.

- **1,518** — Fire alarm boxes taken in and out of service for repair.
- Radios, pagers programed
- Accountability IDs created
- Several specific department reports from the CAD system
- CAD response table and mapping changes
- New hire dispatcher training, full-time and per-diem
- Dispatcher continuing education programs

Resources Available:

Engines	92	Tankers	12
Ladders	5	Rescues	22
Forestry	38	Ambulances	52
Utilities	26	Fire Boats	30
Towers	7	Air Units	5
ATVs	13	Command Vehicles	31

Statistics:

- 🚒 Began operations in September of 1971. Moved operations to our current facility in June of 2000.
- 🚒 Dispatches Fire and Medical Emergencies for 35 communities and 35 Fire and EMS Agencies.
- 🚒 Serves a population of 115,383 residents.
- 🚒 Is spread over 5 NH Counties, covering a geographical area of 1,494 square miles (16% of the area of the State of NH — 1.5 times the size of the state of Rhode Island).
- 🚒 Protects over \$18.8 billion dollars of property.
- 🚒 Has an operating budget of \$1,165,880 (2014 budget).
- 🚒 Has 8 full-time and 7 part-time employees.
- 🚒 Dispatched 23,550 incidents during 2015 (65 calls per day).
- 🚒 Dispatched 22,072 incidents during 2014 (60 calls per day).
- 🚒 Dispatched 21,570 incidents during 2013 (59.1 calls per day).
- 🚒 Dispatched 21,504 incidents during 2012 (58.92 calls per day).

LAKES REGION FIRE APPARATUS, INC.



Fire Apparatus Sales & Service Since 1991



Our Newest Deliveries in New Hampshire and Vermont!

Congratulations, Chief Tom Austin and the Danbury, NH Fire Department on the recent delivery of your HME Ahrens-Fox custom pumper.

This HME Ahrens-Fox includes:

- 1871 SFO MFD Chassis
- Cummins 370hp Engine
- 1500 gpm Pump
- Class A Foam
- 1000 Gallon Tank
- Double High Side Rescue Pumper Body
- LED Scene and ICC Lighting



Congratulations, Chief Kevin Fontecha and the Waterford, VT Fire Department on the recent delivery of your HME Ahrens-Fox Mini-Rescue.

This truck includes:

- 2016 F550 4x4 Chassis
- 6.7 Diesel Engine
- Stainless Steel Rescue/Utility Body With Full Height, Full Depth Compartments
- Roll-Out Rear Body Tool Storage
- LED Scene and ICC Lighting

PO Box 970, West Ossipee, NH 03890 • Phone: 603-323-7117 • Fax: 603-323-7447
Email: info@lakesfire.com • www.lakesfire.com





Lakes Region Mutual Fire Aid Association
62 Communications Drive
Laconia, NH 03246

Department News

Send your Department News
to
debbie@debbiekgraphics.com.

Include new hires, promotions,
new apparatus, department
events,
open training events, etc.



Chris Reynolds



Erin Hannafin

Congratulations to LRMFA Dispatchers

Congratulations to LRMFA **Dispatcher Chris Reynolds**, who recently completed the EMI/FEMA, Telecommunicator Emergency Response Team – Team Leader Course, and **Dispatcher Erin Hannafin** who completed Association of Public Safety Communications Officials – International, (APCO) Communications Training Officer Program. 🚒

“Rural Hitch” Available Electronically

If you would like to receive the *Rural Hitch* electronically (and save trees and postage!), please send your email to debbie@debbiekgraphics.com.

Feel free to share your electronic copy with others. We'll add anyone to the email list who is interested in receiving the *Rural Hitch*.

SCBA Respirator Fit Testing Service Available From LRMFA For Member Agencies!

To SCHEDULE FIT TESTING AT YOUR DEPARTMENT, PLEASE CONTACT DEPUTY CHIEF BELAND AT 528-9111 OR JBELAND@LRMFA.ORG.